

Installing *SimplePCI* 6.6

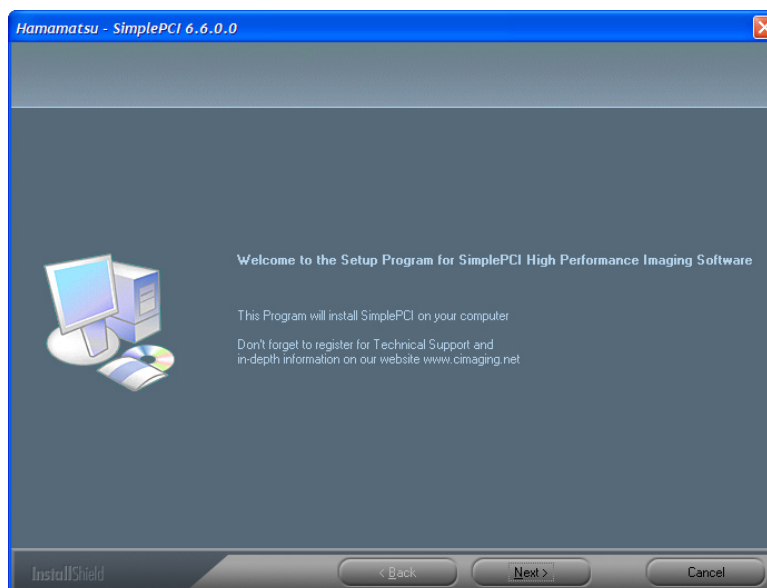
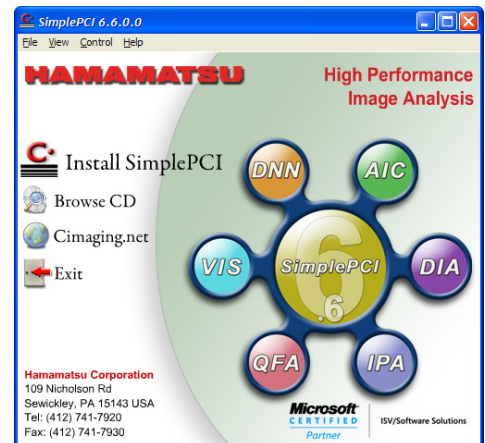
1. Read the **Readme.txt** file found on the Installation CD for up-to-date information for your system compatibility and support.
2. Uninstall 4.x or older version of **SimplePCI** using the Add/Remove programs icon in the Control Panel. Make sure to click 'Yes' to all the warning messages during the uninstallation process. Upon completion, restart the computer. If you currently have version 5.0-5.3 installed, the installer will update these versions automatically to 6.6. **Note that installation must be done by a user with administrator privileges.**
3. Securely connect the dongle or hardware key to the parallel or USB port of the computer.
4. It is recommended that you exit all open programs and temporarily disable any virus protection.
5. Insert the **SimplePCI** installation CD into the CD-ROM drive. If autoplay is enabled, the **SimplePCI** setup will run automatically. If the autoplay fails to start, locate your CD-ROM drive and double click on **autorun.exe**.
6. Click the **Install SimplePCI** button and follow the screen wizard as described in the following steps.
7. Read the Welcome message and click **Next**.




Parallel Dongle



USB Dongle



Installing SimplePCI 6.6

8. Review the Software License information and click **Yes** if you agree with the terms of the agreement, otherwise click **No**.
9. Read the READ ME section for up-to-date information on systems compatibility and support. When you are ready, click **Yes**.
10. On the Personalize screen, enter your registration information and click **Next**. The serial number can be found on your dongle. The dongle number consists of three letters, PCI, followed by 3 to 4 numbers, (eg. PCI-123).
11. Choose the Destination Folder and click **Next**. It is recommended to install the software in the default path C:\Program Files\SimplePCI.
12. Choose the Program Folder name and click **Next**. It is recommended to use the default name, Hamamatsu.
13. If you are ready to proceed with the installation, click **Yes**, otherwise click **No**.
14. Click **Finish** to complete the installation and reboot the computer. It is recommended to restart the computer after installing the software.
15. Click the  icon on your Desktop to launch SimplePCI.

